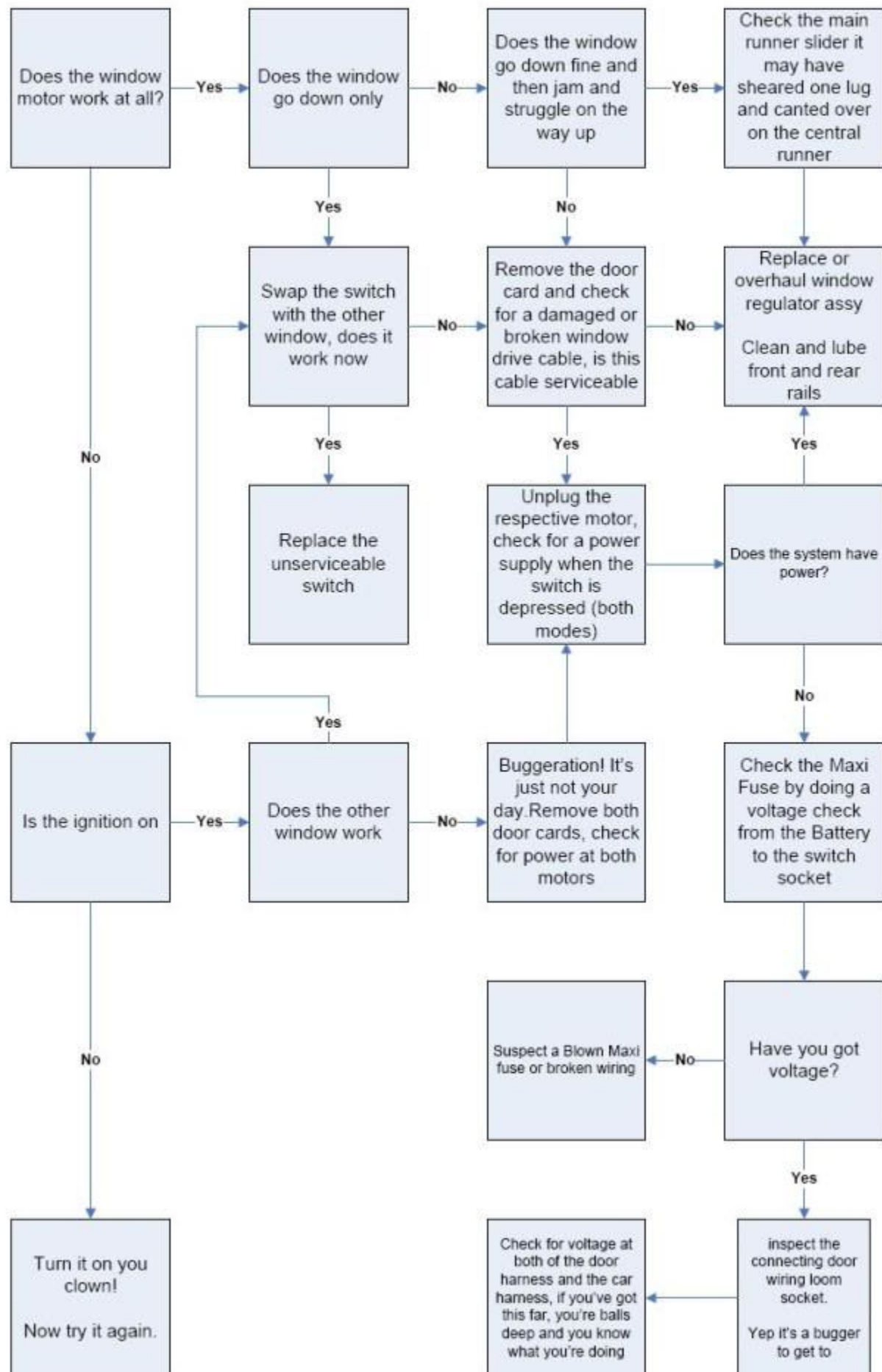


An aide to fault finding door window faults



Removal, Overhaul and replacement of the window regulator

Warning the window is heavy and has the ability to crush and possible decapitate your little pinkies should you not take safety precautions.

Have some kitchen roll handy for later...you'll see why

Removal

1) Open the car door



2) Remove the door cheater (the black triangle), it will just pull off from the top point, it's held in place a plastic equivalent to Velcro. In true Lotus style the Velcro won't separate but the glue holding the Velcro will dis-bond.



3) Remove the door card insert, that's the red stripy bit. It's normally a case of just teasing off the insert, but over the years all manor of adhesives may have been used.



4) This will reveal either two or four screws, remove them.



5) Remove the screws in the front of the door card, two or three screws depending on which door cards are fitted to your car.



6) Remove the red clip on the door lock plunger and remove the plunger upwards. This will give access to another screw which holds on the door card door lock plunger escutcheon in place. remove that screw, remove the lock plunger escutcheon. Don't be disheartened if you have just snapped the little red locking tab. they are available from Lotus for a couple of pound Pt No A100B6151H, they are also available from Vauxhall Pt No V0090286850 (Plunger and clip Pt No V0090252695)



7) Remove the screw on the trailing edge of the door card



8) Remove the door card handle escutcheon, this will reveal two more screws, remove them.



9) Gentle tease back the door card carpet to reveal several hidden bolts



10) Remove the door card

11) Remove the speaker and expose the aperture



12) Remove the other two black plastic covers





14) How to undertake the regulator removal, step by step...

15) At the base of the regulator runner there is a bracket, remove the inner bolt and the two bolts underneath the door and extract the bracket



16) the pesky bracket



17) Try and get the main slider/butterfly assembly to just above the door reinforcing cross member by using the car electrics and a helping hand.

Normally the window will go down, but will require a helping hand to go up. Remove the C-Clip and pop the butterfly off, remove them clear of the door. There's a high probability the butterfly clip is now beyond repair, a new lotus item is still available Pt No A100B6271S for about £5



18) Pull the window all the way to the top of the door, insert some sort of safety device to hold the door glass fully up ([The Kitchen roll](#)), or get the better half to hold the window up. If this glass falls down it's gonna hurt.

19) disconnect the orange electric plug which goes onto the regulator



20) Remove the upper nut and washer on the slider runner, and then three nuts and washers in the center of the door

21) you should now be at a stage to undertake the regulator removal. The trick is to move the bottom rearwards and then move it upwards, you should then be able to pop out the top bolt out of the inner door skin, lower the assembly down to the bottom of the door....and simply squash it down a little bit and slide the full unit out of the speaker aperture.

Refitting is simply the reverse.... it's not too far off to tell the truth.

But here are few photographs and pointers to get you going on your way.

Sorry if it's teaching some people to suck eggs, but here goes...

Make sure you have the correct regulator for the correct door, they're handed.

Slave in the regulator and test the unit before you actually fit the item.

Leave the slider a squidge below the mid position, you'll have car electrics to move the slider should you require

Make sure the door glass is fully up...safety first and all that..kitchen roll...friend...

The next bit is all about orientation...

1) Make sure you have the correct regulator for the appropriate door, orientate yourself....

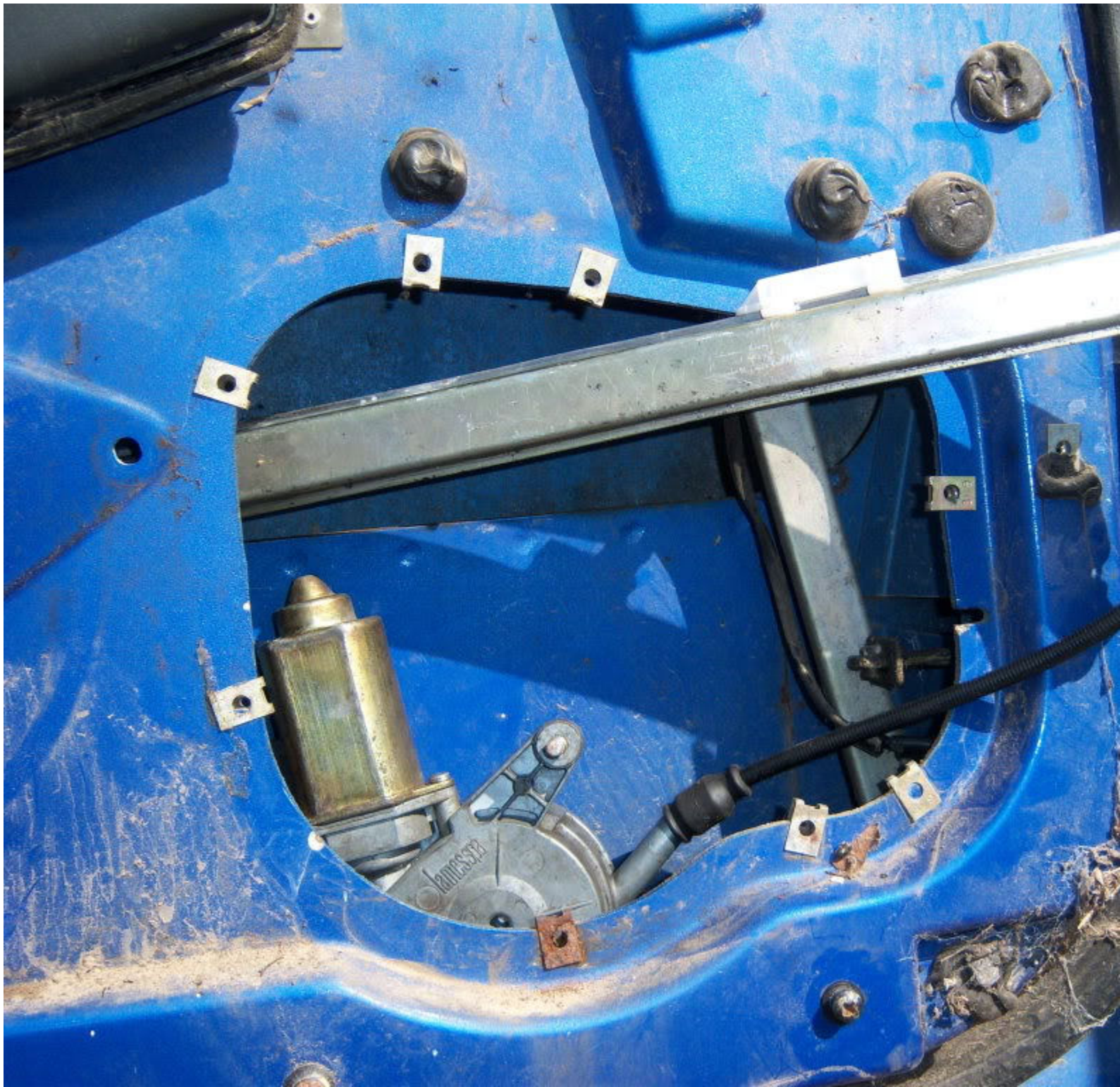
Bolts facing inboard, slider facing outboard



2) rotate the unit clockwise 90 degrees



3) Squash it down a bit, and slide it in via the speaker aperture



4) Slide the regulator assembly rearwards



5) Tilt the unit to about 45 degrees (maybe higher) and slide the top bolt threw the inner skin from a point just forward of the hole, be aware you may catch the bottom of the glass. lift the trailing edge higher than 45 degrees it'll give you more room to play with.



6) once the top bolt is in place the unit can be rotated to the vertical (replace the top and middle nuts)

7) Then it's as you would expect...lower the window onto the slider fit the butterfly and circlip

8)The next part to be careful of is refitting the lower bracket, you will have the ability to make the door glass strike the door cross member (not good), so take your time and set the window up correctly. (basically if you move the bottom of the regulator runner in and out, the window will move in sympathy all be it in reverse along the top edge in)

9) make sure your window runs free and easy and doesn't foul the hood before you rebuild the door card.

http://s615.photobucket.com/albums/tt234/Elan_SE/?action=view¤t=100_2071.mp4